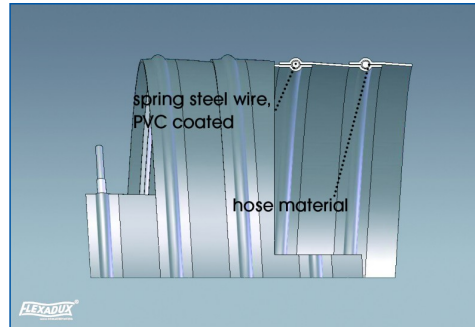
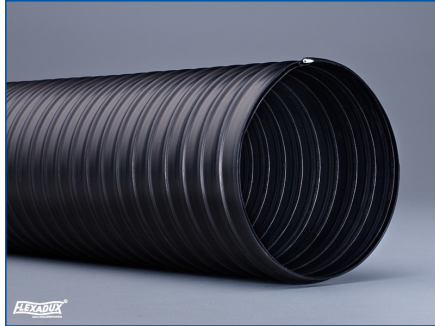




FLEXADUX® P 1 N PU EL

**Light weight and very flexible
Polyurethane ducting, electrically
conductive**



Material:

Polyether-Polyurethane, black

Single Length:

10 and 15 m

Temperature Resistance:

- 40° up to + 100° C

Applications:

Suction and transport of light weight materials like dusts, splinters and fibres in food, paper, woodworking and textile industry, for explosion-endangered areas

Properties:

Electrically conductive ($R \leq 10^4$ Ohm), conform to ATEX-guideline 2014/34/EU, TRBS 2153 and for aspiration also conform to TRGS 727, excellent flexibility, high abrasion resistance, good resistance to oil and petrol fumes, good UV and ozone resistance

TECHNICAL DATA

Dia. (mm)	Weight (kg/m)	Wall Thickness (mm)	Bend. Radius (mm)	max. Work.Press. (bar)	max. Vacuum (bar)
20	0,14	0,50	20	1,80	0,45
25	0,18	0,50	25	1,65	0,40
30	0,21	0,50	30	1,50	0,35
40	0,28	0,50	40	1,40	0,30
50	0,44	0,50	50	1,30	0,28
60	0,52	0,50	60	1,10	0,25
70	0,61	0,50	70	0,90	0,22
75	0,65	0,50	75	0,80	0,20
80	0,69	0,50	80	0,70	0,18
100	0,85	0,60	100	0,60	0,15
120	1,02	0,60	120	0,50	0,15
125	1,06	0,60	125	0,40	0,12
140	1,18	0,60	140	0,30	0,12
150	1,27	0,60	150	0,25	0,10
175	1,62	0,60	175	0,25	0,10
200	1,85	0,60	200	0,20	0,10
225	2,07	0,60	225	0,20	0,09
250	2,50	0,60	250	0,15	0,09
300	2,98	0,60	300	0,12	0,06
350	3,46	0,60	350	0,10	0,04
400	3,94	0,60	400	0,08	0,02

Further diameters available upon request!

Technical data are based on + 23° C.

