

**RACCORDI AUTOMATICI IN TECNOPOLIMERO - INCH**

*TECHNOPOLYMERIC PUSH-IN FITTING - INCH*

*KUNSTSTOFF STECKVERSCHRAUBUNGEN - INCH*

*RACCORDS INSTANTANÉS EN TECHNOPOLYMÈRE - INCH*

*RACORDAJE AUTOMÁTICO EN TECNOPOLÍMERO - INCH*

*CONEXÕES PUSH-IN EM TECNOPOLÍMERO - INCH*

**New**



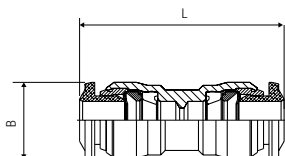
**Serie 85000 - INCH**

INCH

## 85040

### RACCORDO DIRITTO INTERMEDIO

STRAIGHT CONNECTOR  
 VERBINDUNGSVERSCHRAUBUNG  
 RACCORD UNION DOUBLE  
 RACOR RECTO INTERMEDIO  
 CONEXÃO RETA TUBO-TUBO

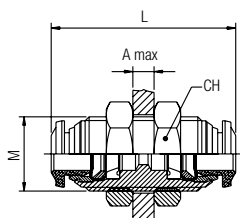


Code	Tube	Tube	L	B	Pack.
85040 00 001	1/8	1/8	28	10	10
85040 00 002	5/32	5/32	31	10	10
85040 00 004	1/4	5/32	34	12.5	10
85040 00 005	1/4	1/4	35	12.5	10
85040 00 014	5/16	5/32	37	14	10
85040 00 006	5/16	1/4	37	14	10
85040 00 007	5/16	5/16	37	14	10
85040 00 008	3/8	1/4	44	17	10
85040 00 009	3/8	5/16	44	17	10
85040 00 010	3/8	3/8	45	17	10
85040 00 013	1/2	5/16	50	20	10
85040 00 011	1/2	3/8	50	20	10
85040 00 012	1/2	1/2	50	20	10

## 85050

### RACCORDO DIRITTO INTERMEDIO DI ATTRAVERSAMENTO

BULKHEAD CONNECTOR  
 SCHOTTVERSCHRAUBUNG  
 RACCORD TRAVERSÉE DE CLOISON  
 RACOR RECTO INTERMEDIO PASATABIQUES  
 CONEXÃO PASSA-MURO RETA TUBO-TUBO

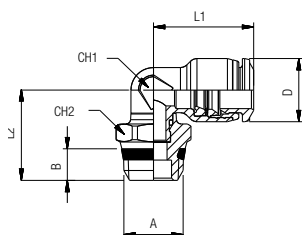


Code	Tube	M	L	CH	A max	Pack.
85050 00 001	1/8	M10X1	26	14	5	10
85050 00 002	5/32	M12X1	32	17	7	10
85050 00 003	1/4	M14X1	35	17	9.5	10
85050 00 004	5/16	M16X1	37.5	19	10.5	10
85050 00 005	3/8	M20X1	44	24	12.5	10
85050 00 006	1/2	M22X1	49	26	16.5	10

## 85111

### RACCORDO A L ORIENTABILE MASCHIO "UNIVERSAL SHORT"

ORIENTING ELBOW MALE ADAPTOR "UNIVERSAL SHORT"  
 WINKELVERSCHRAUBUNG KONISCH (DREHBAR) "UNIVERSAL SHORT"  
 EQUERRE ORIENTABLE MÂLE, CONIQUE "UNIVERSAL SHORT"  
 RACOR A L ORIENTABLE MACHO CÓNICO "UNIVERSAL SHORT"  
 CONEXÃO MACHO EM "L" ORIENTÁVEL COM ROSCA "UNIVERSAL SHORT"



Code	Tube	A	B	L1	L2	CH1	CH2	D	Pack.
85111 00 001	1/8	1/8	5.5	15	15.5	7	13	10	10
85111 00 002	1/8	1/4	7	15	18	7	15	10	10
85111 00 003	5/32	1/8	5.5	16.5	15.5	7	13	10	10
85111 00 004	5/32	1/4	7	16.5	18	7	15	10	10
85111 00 006	1/4	1/8	5.5	20.5	17.5	9	13	12.5	10
85111 00 007	1/4	1/4	7	20.5	19	9	15	12.5	10
85111 00 008	1/4	3/8	7.5	20.5	20	9	17	12.5	10
85111 00 009	1/4	1/2	9	20.5	22	9	21	12.5	10
85111 00 010	5/16	1/8	5.5	22	18.5	10	13	14	10
85111 00 011	5/16	1/4	7	22	20	10	15	14	10
85111 00 012	5/16	3/8	7.5	22	20.5	10	17	14	10
85111 00 013	5/16	1/2	9	22	23	10	21	14	10
85111 00 014	3/8	1/4	7	26.5	22	13	16	17	10
85111 00 015	3/8	3/8	7.5	26.5	22	13	17	17	10
85111 00 016	3/8	1/2	9	26.5	24.5	13	21	17	10
85111 00 017	1/2	1/4	7	30	23	16	16	20	10
85111 00 018	1/2	3/8	7.5	30	23	16	17	20	10
85111 00 019	1/2	1/2	9	30	25.5	16	21	20	10