

SM 38 EC/SC



STANDARD DIE SETS

	Range (mm)	Length
38-06	6-16	45
38-08	8-18	45
38-11	11-21	45
38-14	14-24	45
38-17	17-27	45
38-20	20-30	55
38-23	23-33	55
38-26	26-36	55
38-30	30-40	75
38-34	34-44	75
38-39	39-49	85
38-45	45-55	85
38-51*	51-61	85

* Max. ferrule diameter before crimping 61 mm

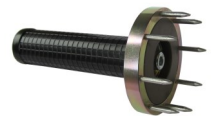
TECHNICAL SPECIFICATIONS

Max hose size	1 1/2" 2 SN, 1 1/4" 4SH
Crimping force (kN):	1650
Max crimping Ø (mm):	61
Max opening (mm):	die diameter + 32
Standard motor:	4 kW 400V 3-Ph
Different voltage versions available	
Control	Digital EC control Advanced digital SC control
Master dies opening / Length(mm):	105/105
Crimping range (mm):	6 – 61
Weight (kg)	157 (without oil)
Dimensions (LxWxH mm)	640 x 565 x 640
Quick Change-set	Optional
Foot pedal	Optional (only for SC version)
Stand for machine	Optional

OPTIONS



Quick Change Set: including storage rack & handle



Solid stand with ability to mount the Quick Change set and machine



Foot pedal only for SC version