

# Claw Couplings



**LUDECKE** claw couplings are made of stainless steel 1.4401 and 1.4305 that is resistant to rust and acid. They are manufactured according to lost wax technique, which guarantees a special surface finish.

The products are ideally suited for connecting lines to carry chemicals (depending on mixture/ concentration) in tank and container construction, chemical and petrochemical industry as well as in food and drinking water applications.

#### Advantages:

- First-class stainless steel
- Robust, reliable, absolutely leakage-proof and durable
- Easy handling
- Increased safety with MODY-safety-screwing-couplings
- Identical coupling head: connection versions and sealing systems can be connected with each other
- Maximum bore for maximum flow rate
- Sealing ring made of FKM (resistant to acid)

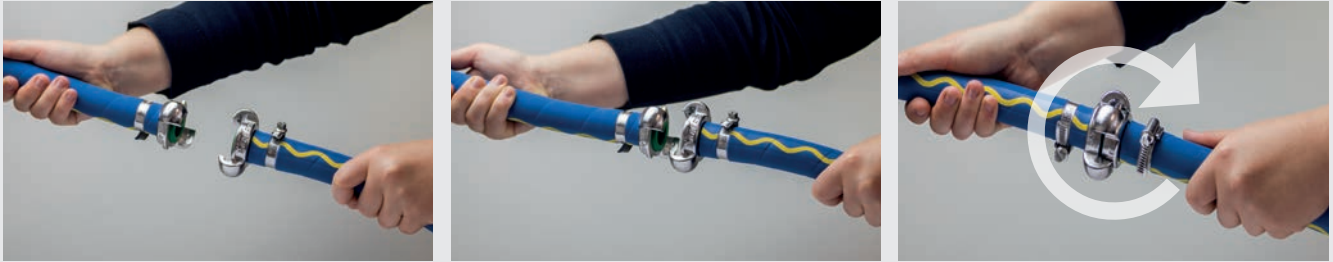
## Broad Range

The **LUDECKE** claw couplings for the processing industry are available in various sizes and connection types as well as special safety version (MODY).



# Connected in Seconds

Push the two couplings together at 180° degrees opposite to each other until the seal faces touch. Afterwards, rotate one coupling half as far as it will go into the opposite direction of the other - the couplings lock into place.



To disconnect, push the coupling and the counterpart together in axial direction. Afterwards, turn one coupling half as far as possible in the opposite direction as you would do when connecting and remove it from the counterpart.



To ensure a perfect connection, the locking nut at the MODY-safety-screwing coupling is tightened manually.  
 In general, we recommend to always use a classic claw coupling (DIN 3489) with a MODY-safety-screwing coupling (DIN 3238).  
 This connection is absolutely safe, easy to connect and 100 % leakage-proof.

## Overview of Claw Couplings made of Stainless Steel

|       | Claw Couplings | MODY-Safety-Screwing Couplings |
|-------|----------------|--------------------------------|
| Norm: | DIN 3489       | DIN 3238                       |



| Materials                                 | Claw Couplings         | MODY-Safety-Screwing Couplings |
|---|------------------------|--------------------------------|
| Claw:                                     | Stainless Steel 1.4401 | Stainless Steel 1.4401         |
| Body:                                     | Stainless Steel 1.4401 | Stainless Steel 1.4404         |
| Locking nut:                              | -                      | Stainless Steel 1.4305         |
| Seals:                                    | FKM                    | FKM                            |
| Special seals for other media on request: | TFEP, EPDM             | TFEP, EPDM                     |
| Max. Working Pressure:                    | PN 16 bar              | PN 16 bar                      |
| Temperature:                              | -30°C – + 200°C        | -30°C – + 200°C                |
| Thread Types:                             | ISO 228                | ISO 228                        |
| Type of valve:                            | straight-through       | straight-through               |
| Operation:                                | Two-Hands              | Two-Hands                      |
| Claw Distance:                            | 42 mm                  | 42 mm                          |
| Page:                                     | 330                    | 331                            |