

Standard Quick Connect Couplings



An easy and efficient compressed air supply is essential for every industrial factory.

The original **LUDECKE** standard quick connect couplings can be used to quickly connect/disconnect media-carrying lines to tools, machines and equipment in the processing industry.

All quick connect couplings are made of stainless steel and are available in different versions: ranging from micro and mini to industrial quick connect couplings.

Moreover, the **OptiFlow-Line** provides energy-efficient coupling systems.

Advantages:

- High-quality materials (Stainless steel 1.4305 or 1.4404)
- Sturdy, reliable and durable
- Easy to couple
- Various sizes, connection and valve types
- Different surfaces (knurled sleeve/ smooth sleeve)
- Patented OptiFlow by **LUDECKE**® valve technology

OptiFlow-Line

With the products from the **LUDECKE OptiFlow-Line**, you will receive energy-optimised coupling systems which achieve higher flow rates and significantly reduce energy consumption. This leads to decreasing energy costs as well as to increasing durability and lifetime of machines and tools.



LUDECKE OptiFlow-Line

- Patented OptiFlow by **LUDECKE**® valve technology
- Extremely high flow rates
- Low pressure drop
- High durability
- Great operational safety and best sealing characteristics

**Opti[®]
Flow**
by **LUDECKE**



Connected in Seconds

All the **LUDECKE** standard quick connect couplings work according to the common coupling principle of one-hand quick connect couplings.



One-hand operation: To connect simply push the plug into the coupling.

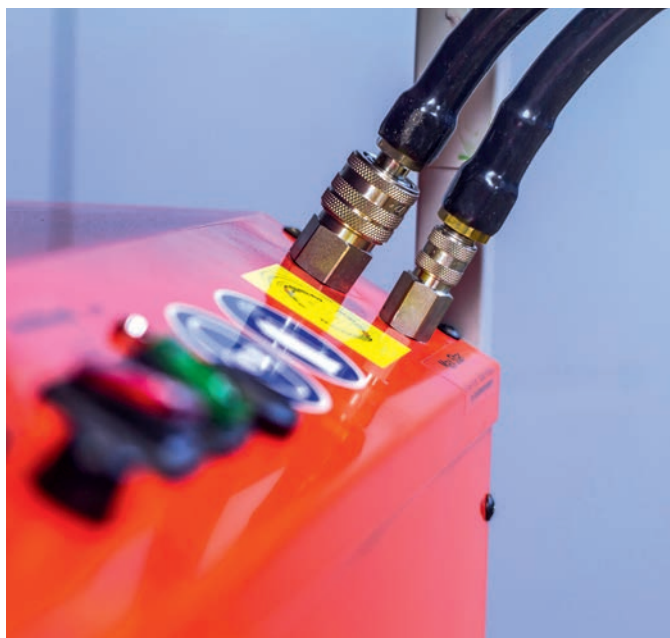


To disconnect, pull back the sleeve from the coupling (comes with automatic locking mechanism in shut-off couplings).

Various Applications

Thanks to the broad range of products, the quick connect couplings can be used in various applications.

For areas with increased hygiene requirements, we recommend products with an easy-to-clean, ergonomically smooth surface to avoid dirt from collecting.



Overview of Standard Quick Connect Couplings

Quality-Line

Series

ESMCE
DN 2.7*

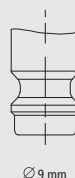
ESME
DN 5*

ESE
DN 7.2*

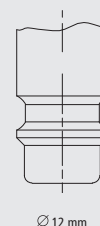
Plug Profile
(original size)



Ø 5 mm



Ø 9 mm



Ø 12 mm



Materials

Body:

Stainless Steel 1.4305/
Stainless Steel 1.4404

Stainless Steel 1.4305/
Stainless Steel 1.4404

Stainless Steel 1.4305/
Stainless Steel 1.4404

Sleeve:

Stainless Steel 1.4305/
Stainless Steel 1.4404

Stainless Steel 1.4305/
Stainless Steel 1.4404

Stainless Steel 1.4305/
Stainless Steel 1.4404

Valve body:

Stainless Steel 1.4305/
Stainless Steel 1.4404

Stainless Steel 1.4305/
Stainless Steel 1.4404

Stainless Steel 1.4305/
Stainless Steel 1.4404

Valve:

Stainless Steel 1.4305/
Stainless Steel 1.4404

Stainless Steel 1.4305/
Stainless Steel 1.4404

Stainless Steel 1.4305/
Stainless Steel 1.4404

Springs, Retaining rings:

Stainless Steel 1.4310/
Stainless Steel 1.4571

Stainless Steel 1.4310/
Stainless Steel 1.4571

Stainless Steel 1.4310/
Stainless Steel 1.4571

Balls:

Stainless Steel 1.3541/
Stainless Steel 1.4404

Stainless Steel 1.3541/
Stainless Steel 1.4404

Pins: Stainless Steel 1.4305/
Stainless Steel 1.4404

Seals:

FKM

FKM

FKM

Special seals for other media
on request:

EPDM, FFKM

EPDM, FFKM

EPDM, FFKM

Plug:

Stainless Steel 1.4305/
Stainless Steel 1.4404

Stainless Steel 1.4305/
Stainless Steel 1.4404

Stainless Steel 1.4305/
Stainless Steel 1.4404

Max. Working Pressure:

PN 35 bar

PN 35 bar

PN 35 bar

Temperature**:

-15°C – + 200°C

-15°C – + 200°C

-15°C – + 200°C

Thread Types:

ISO 228/ DIN 13

ISO 228/ DIN 13

ISO 228

Flow Rate:

165 l/min

510 l/min

1150 l/min

(Air - 6 bar/ 0.5 bar pressure drop)
single shut-off:

Type of valve:

single/ double/ straight-through

single/ double/ straight-through

single/ double/ straight-through

Operation:

One-Hand

One-Hand

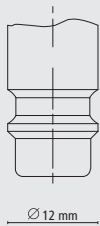
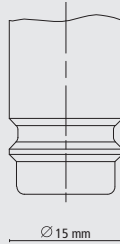
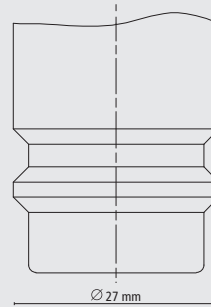
One-Hand

Page:

286

291

296

ESIE
DN 7.8*

ESIGE
DN 10*

ESGE
DN 19*


Stainless Steel 1.4305/
Stainless Steel 1.4404

Stainless Steel 1.4305/
Stainless Steel 1.4404

Stainless Steel 1.4305/
Stainless Steel 1.4404

Stainless Steel 1.4305/
Stainless Steel 1.4404

Stainless Steel 1.4310/
Stainless Steel 1.4571

Stainless Steel 1.4034/
Stainless Steel 1.4404

FKM

EPDM, FFKM

Stainless Steel 1.4305/
Stainless Steel 1.4404

PN 35 bar

-15°C – + 200°C

ISO 228

2000 l/min

single/ double/ straight-through
One-Hand

301

Stainless Steel 1.4305/
Stainless Steel 1.4404

Stainless Steel 1.4305/
Stainless Steel 1.4404

Stainless Steel 1.4305/
Stainless Steel 1.4404

Stainless Steel 1.4305/
Stainless Steel 1.4404

Stainless Steel 1.4310/
Stainless Steel 1.4571

Stainless Steel 1.4034/
Stainless Steel 1.4404

FKM

EPDM, FFKM

Stainless Steel 1.4305/
Stainless Steel 1.4404

PN 35 bar

-15°C – + 200°C

ISO 228

3200 l/min

single/ double/ straight-through
One-Hand

304

Stainless Steel 1.4305/
Stainless Steel 1.4404

Stainless Steel 1.4305/
Stainless Steel 1.4404

Stainless Steel 1.4305/
Stainless Steel 1.4404

Stainless Steel 1.4305/
Stainless Steel 1.4404

Stainless Steel 1.4310/
Stainless Steel 1.4571

Stainless Steel 1.4034/
Stainless Steel 1.4404

FKM

EPDM, FFKM

Stainless Steel 1.4305/
Stainless Steel 1.4404

PN 35 bar

-15°C – + 200°C

ISO 228

8000 l/min

single/ double
One-Hand

307

*These stainless steel series is available in two versions on request (1.4305 and 1.4404). Accordingly, the materials of the individual components also differ.

**Subject to media and seals