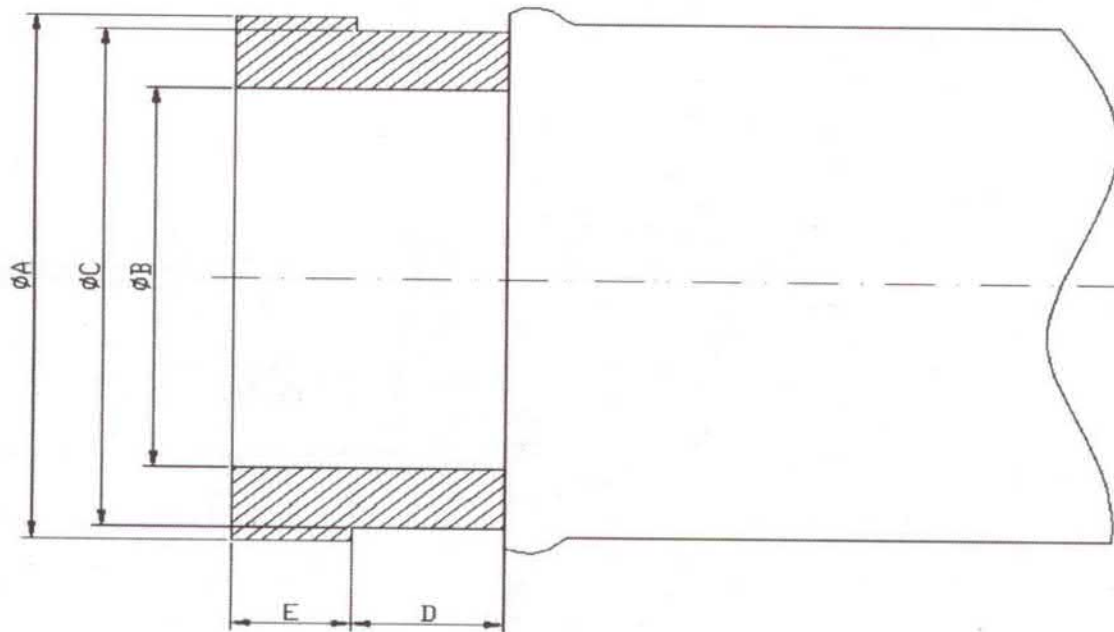


# External Swaged Type Couplings for Steel Wire Braided Concrete Pumping Hoses

## Çelik Tel Örgülü Beton ve Çimento Hortumlarının Dıştan Sıkma Tip Rakorları



	2 1/2"	3"	4"	4 1/2"	5"	5 1/2"
Ø A	89.0 mm	90.0 mm	114.3 mm	127.5 mm	142 mm	148 mm
Ø B	64.4 mm	77.0 mm	98 mm	98.0 mm	124 mm	124 mm
Ø C	84.6 mm	84.5 mm	108 mm	114.6 mm	133 mm	139 mm
D	20.0 mm	18.0 mm	18 mm	18.0 mm	18 mm	18 mm
E	16.0 mm	16.5 mm	17 mm	17.0 mm	17 mm	17 mm

P.C = Stems to be case hardened to min. 700 Hv • 0.4 mm. DEPTH.

Die tiefe der Innenteil ist 0.4 mm und hat min 700 Hv. Härte

NB: Parte interiore indurito al min. 700 vickers • 0.4 mm PROFONDITA

İç parça 0.4 mm derinlikte 700 vickers sertlikte.

Material / Material / Materiale / Malzeme:

ST 52.0 DIN-1629 / ST 52.3-Din 17121/ ST 52.4-DIN 1630

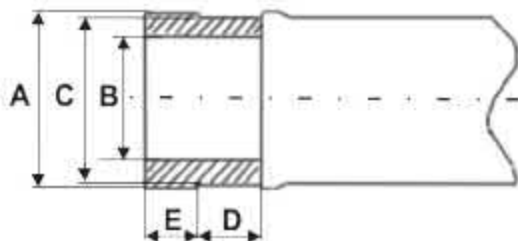
ASTM A 106 grade a or grade B api 5L Grade A or B



KONCOVKA BAUTEC 125



Rozměry koncovek



T  
A  
B  
U  
L  
K  
A  
  
K  
O  
N  
C  
O  
V  
E  
K  
  
B  
A  
U  
T  
E  
C

Vytaulic	∅ A	∅ B	∅ C	∅ D	∅ E	
						kg
2"	60,3	50,0	57,0	18,0	16,0	
2 1"	73,0	65,0	69,0	20,0	16,0	
3" x 65	88,9	65,0	84,0	20,0	16,0	2,9
3" x 76	88,9	76,0	84,0	20,0	16,0	
3 1/4" x 76	97,0	77,0	89,0	20,0	16,5	
3 1/4" x 80	97,0	80,0	89,0	19,0	17,0	
4"	114,3	100,0	108,0	20,0	16,0	
4 1/2"	127,0	100,0	114,0	20,0	16,0	5,0
4 1/2" Sup.	127,0	97,0	114,0	20,0	16,0	5,5
5"	141,0	125,0	133,0	20,0	17,0	
5 1/2"	148,0	125,0	139,0	20,0	17,0	6,0
5 1/2" Sup.	148,0	120,0	139,0	20,0	17,0	6,7
6"	167,0	150,0	159,0	20,0	17,0	
6" Sup.	167,0	146,0	159,0	20,0	17,0	
8"	219,0	202,0	214,0	14,0	19,0	

125

Poznámka: Sup. znamená extra těžká varianta koncovky