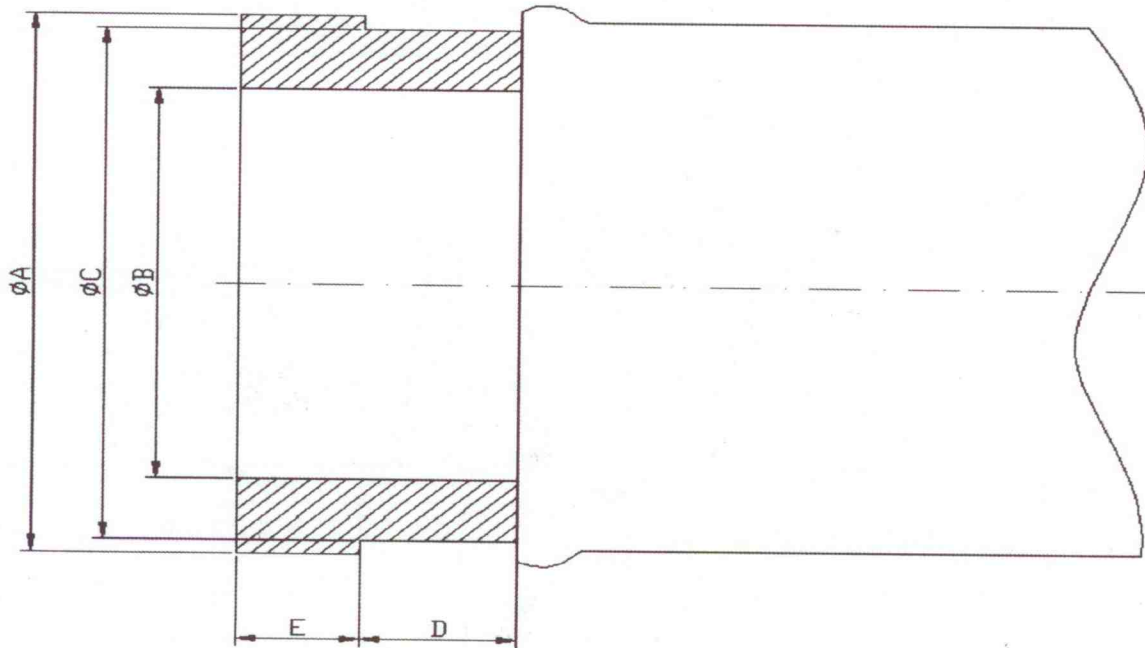


# External Swaged Type Couplings for Steel Wire Braided Concrete Pumping Hoses

## Çelik Tel Örgülü Beton ve Çimento Hortumlarının Dıştan Sıkma Tip Rakorları



	2 1/2"	3"	4"	4 1/2"	5"	5 1/2"
Ø A	89.0 mm	90.0 mm	114.3 mm	127.5 mm	142 mm	148 mm
Ø B	64.4 mm	77.0 mm	98 mm	98.0 mm	124 mm	124 mm
Ø C	84.6 mm	84.5 mm	108 mm	114.6 mm	133 mm	139 mm
D	20.0 mm	18.0 mm	18 mm	18.0 mm	18 mm	18 mm
E	16.0 mm	16.5 mm	17 mm	17.0 mm	17 mm	17 mm

P.C = Stems to be case hardened to min. 700 Hv\* 0.4 mm. DEPTH.

Die tiefe der Innenteil ist 0.4 mm und hat min 700 Hv. Härte

NB: Parte interiore indurito al min. 700 vickers \* 0.4 mm PROFONDITA

İç parça 0.4 mm derinlikte 700 vickers sertlikte.

Material / Material / Materiale / Malzeme:

ST 52.0 DIN-1629 / ST 52.3-Din 17121/ ST 52.4-DIN 1630

ASTM A 106 grade a or grade B api 5L Grade A or B

