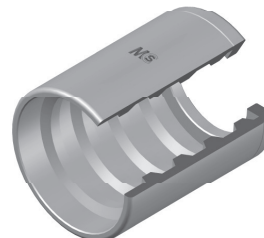
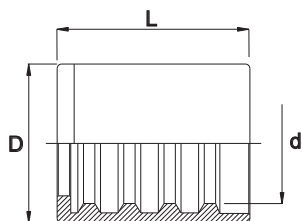


**GHIERA R1 PER TUBO:
R1 FERRULE FOR:
SAE 100 R1AT (EN 853 1SN) - SAE 100 R1A - EN 857 1SC - EN 854 2TE
HOSE TYPE**



Codice Part Number	Ø Int. Tubo Inch. Hose I.D.	D	d	L
FR103	3/16"	19,0	12,8	29,5
FR104	1/4"	20,0	14,0	30,0
FR105	5/16"	22,0	16,0	30,0
FR106	3/8"	24,0	17,6	32,5
FR108	1/2"	28,0	21,2	34,0
FR110	5/8"	32,0	24,9	40,0
FR112	3/4"	35,0	28,7	42,0
FR116	1"	45,0	37,0	48,0
FR120	1" 1/4	55,0	44,6	56,0
FR124	1" 1/2	60,0	51,2	63,0
FR132	2"	76,2	64,6	76,0
FR140*	2" 1/2	87,0	77,8	76,0
FR148*	3"	102,0	92,0	76,0

* Solo per tubi EN857-1SC / EN857-2SC
Only for EN857-1SC / EN857-2SC hoses

M.C.S. HYDRAULICS

Presenta la nuova ghiera per tubo R1, che ha sostituito le precedenti due versioni FR1T (per tubo SAE 100 R1AT) e FR1A (per tubo SAE 100 R1A); questa nuova ghiera può inoltre essere utilizzata su tubo 1SC e 2TE.

M.C.S. HYDRAULICS

Presents the new ferrule for hose R1 which replaces the previous FR1T (for hose SAE 100 R1AT) and FR1A (for hose SAE 100 R1A); this ferrule can also be used with 1SC and 2TE hoses.

**Corretto Impiego Della FR1 :
FR1 Correct Usage :**

Tubo Hose Type	Skive	No Skive
R1AT		No Skive
1SC		No Skive
2TE		No Skive
R1A	Skive	